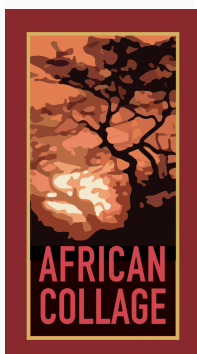




ROVOS RAIL

JOURNEY
INFORMATION

African Collage



PRETORIA-CAPE TOWN
- 12 NIGHTS -

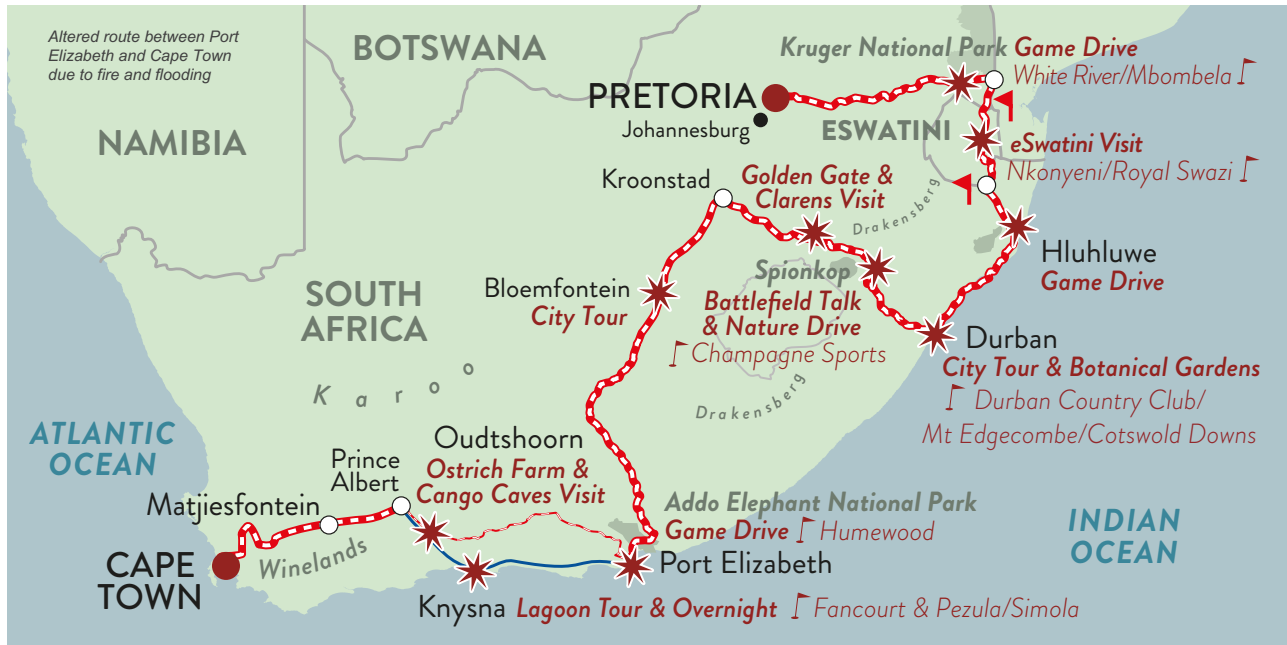
ITINERARY & MAP
COURSE INFORMATION
TRAIN SPECIFICATIONS
GENERAL INFORMATION
TERMS & CONDITIONS

The Most Luxurious Train in the World



ITINERARY

AFRICAN COLLAGE PRETORIA - CAPE TOWN · 12 NIGHTS · 3700KM



LEISURE GUESTS		GOLFERS <i>Courses dependent on availability</i>	
DAY 1: PRETORIA			
	Please check-in a minimum of one hour before departure. Should you wish to visit our museum or do a site tour at Rovos Rail Station, we suggest arriving two hours prior to departure.		
18:00	Depart from Rovos Rail Station, Pretoria . The train travels on the eastern line towards the harsh eMalahleni coal-mining area and Middelburg , known as the “stainless steel capital of Africa”. The Dutch railway building company, NZASM, built the eastern line between Pretoria and Lourenço Marques (Maputo) from 1893 to 1895.		
19:30	Dinner is served in the dining cars. <i>Dress: Formal</i>		
	Please ensure the Train Manager or Administration Deputy has your passport. It will be returned to you before the end of the trip.		
DAY 2: AT LEISURE ON BOARD			
07:00	Breakfast is served in the dining cars until 10:00. The rolling hills of eMakhazeni, eNtokozweni and Dullstroom are a welcome sight and are renowned for the genteel yet skilful sport of trout fishing.		
13:00	Lunch is served in the dining cars. The train descends the spectacular Drakensberg Mountain escarpment, first named by the Voortrekkers who thought the unbroken chain of heavily weathered peaks reminded them of the spines on a dragon's back, hence the name 'Dragon Mountain' or Drakensberg in Afrikaans.		
16:30	Tea in the lounge and observation cars.		
19:30	Dinner is served in the dining cars en route to Malelane . <i>Dress: Formal</i>		
DAY 3: KRUGER PARK <i>BORDER: MPAKA, ESWATINI</i>		WHITE RIVER/MBOMBELA <i>*LEOPARD CREEK</i>	
05:30	Breakfast is served in the dining cars.	05:30	Breakfast is served in the dining cars until departure.
06:30	Game drive in the Kruger National Park with tea, lunch and an opportunity for curio shopping.		Transfer to White River Country Club (±75 min)
15:00	Return to the train.		<u>OR Mbombela</u> (±60 min) for tee off and lunch.
16:30	Tea in the lounge and observation cars.		<i>*If available, golf at Leopard Creek may be booked on request for your own account.</i>
19:30	Dinner is served in the dining cars en route to Mpaka. Border formalities. <i>Dress: Formal</i>	16:30	Tea in the lounge and observation cars.
		19:30	Dinner is served en route to Mpaka. <i>Dress: Formal</i>
The famous Kruger Park (2-million hectares) is a world leader in advanced environmental management techniques and home to an impressive number of species, e.g. 336 species of trees, 49 species of fish, 34 species of amphibians, 114 species of reptiles, 507 species of birds and 147 species of mammals including the Big Five.			

DAY 4: ESWATINI		BORDER: GOLELA, SOUTH AFRICA		NKONYENI/ROYAL SWAZI	
06:00	Breakfast is served in the dining cars.	06:00	Breakfast is served in the dining cars until departure.	06:00	Breakfast is served in the dining cars until departure.
08:00	Transfer (±90 min) to Swazi Candles and Mantenga Cultural Village with lunch.	08:00	Transfer (±75 min) to Nkonyeni <u>OR</u> Royal Swazi for tee off and lunch.	08:00	Transfer (±75 min) to Nkonyeni <u>OR</u> Royal Swazi for tee off and lunch.
14:00	Return to the train (±75 min).	14:00	Return to the train (±75 min).	14:00	Return to the train (±75 min).
16:30	Tea in the lounge and observation cars.	16:30	Tea in the lounge and observation cars.	16:30	Tea in the lounge and observation cars.
19:30	Dinner is served en route to Hluhluwe. <i>Dress: Formal</i>	19:30	Dinner is served en route to Hluhluwe. <i>Dress: Formal</i>	19:30	Dinner is served en route to Hluhluwe. <i>Dress: Formal</i>
	Border formalities.		Border formalities.		Border formalities.
<p>The tiny Kingdom of eSwatini (Swaziland) covers only 17 000km², most of which is mountainous. For such a small country, it is surprising that it sustains two capital cities: Mbabane is the administrative capital and Lobamba is the royal and legislative capital. In April 2018, Swaziland changed its name to the Kingdom of eSwatini (meaning “place of the Swazi”) and is an absolute monarchy. It is landlocked and borders South Africa and Mozambique. At Swazi Candles, guests are invited to interact with the artisans as they make a variety of candles. Woodcarvings, colourful textiles and superb basketwork are also on display. Mantenga Lodge is nestled in the mountains overlooking ‘Execution Rock’. The village is a living museum of old traditions that represents a classic Swazi lifestyle during the 1800s.</p>					
DAY 5: HLUHLUWE-IMFOLOZI PARK					
05:00	Breakfast is served in the dining cars.	05:00	Breakfast is served in the dining cars.	05:00	Breakfast is served in the dining cars.
07:00	Transfer (±30 min) to Hluhluwe for a game drive . As the oldest proclaimed reserve in Africa, Hluhluwe encompasses 960km ² of hilly topography in central Zululand and is known for its rich wildlife and conservation efforts. It is the only state-run park in KwaZulu-Natal with all the Big Five game animals and is also a prime birding destination.	07:00	Transfer (±30 min) to Hluhluwe for a game drive . As the oldest proclaimed reserve in Africa, Hluhluwe encompasses 960km ² of hilly topography in central Zululand and is known for its rich wildlife and conservation efforts. It is the only state-run park in KwaZulu-Natal with all the Big Five game animals and is also a prime birding destination.	07:00	Transfer (±30 min) to Hluhluwe for a game drive . As the oldest proclaimed reserve in Africa, Hluhluwe encompasses 960km ² of hilly topography in central Zululand and is known for its rich wildlife and conservation efforts. It is the only state-run park in KwaZulu-Natal with all the Big Five game animals and is also a prime birding destination.
11:00	Return to the train.	11:00	Return to the train.	11:00	Return to the train.
12:30	Lunch is served in the dining cars. Travel south along the Indian Ocean coastline.	12:30	Lunch is served in the dining cars. Travel south along the Indian Ocean coastline.	12:30	Lunch is served in the dining cars. Travel south along the Indian Ocean coastline.
16:30	Tea in the lounge and observation cars.	16:30	Tea in the lounge and observation cars.	16:30	Tea in the lounge and observation cars.
19:30	Dinner is served in the dining cars. <i>Dress: Formal</i>	19:30	Dinner is served in the dining cars. <i>Dress: Formal</i>	19:30	Dinner is served in the dining cars. <i>Dress: Formal</i>
DAY 6: DURBAN			DURBAN/MT EDGECOMBE/COTSWOLD		
06:00	Breakfast is served in the dining cars.	06:00	Breakfast is served in the dining cars until departure.	06:00	Breakfast is served in the dining cars until departure.
09:00	Enjoy a Durban city tour, a visit to the botanical gardens and lunch at Umhlanga’s beachfront . Durban is the third largest city in South Africa and enjoys great importance due to its industry and very large port.	09:00	Transfer to Durban Country Club (±15 min) <u>OR</u> Mt Edgecombe (±20 min) <u>OR</u> Cotswold Downs (±30 min) for tee off and lunch. Durban is the third largest city in South Africa and enjoys great importance due to its industry and very large port.	09:00	Transfer to Durban Country Club (±15 min) <u>OR</u> Mt Edgecombe (±20 min) <u>OR</u> Cotswold Downs (±30 min) for tee off and lunch. Durban is the third largest city in South Africa and enjoys great importance due to its industry and very large port.
15:00	The train traverses the Valley of a Thousand Hills .	15:00	The train traverses the Valley of a Thousand Hills .	15:00	The train traverses the Valley of a Thousand Hills .
16:30	Tea in the lounge and observation cars.	16:30	Tea in the lounge and observation cars.	16:30	Tea in the lounge and observation cars.
19:30	Dinner is served. <i>Dress: “Africa” Theme or Smart Casual</i>	19:30	Dinner is served. <i>Dress: “Africa” Theme or Smart Casual</i>	19:30	Dinner is served. <i>Dress: “Africa” Theme or Smart Casual</i>
DAY 7: SPIONKOP			CHAMPAGNE SPORTS RESORT		
06:00	Breakfast is served in the dining cars.	06:00	Breakfast is served in the dining cars until departure.	06:00	Breakfast is served in the dining cars until departure.
09:00	Transfer (±30 min) to Spionkop Lodge to hear the historic tale of the Battle of Spionkop and walk in the footsteps of Churchill and Gandhi. Enjoy lunch.	09:00	Transfer (±75 min) to Champagne Sports Resort for tee off and lunch.	09:00	Transfer (±75 min) to Champagne Sports Resort for tee off and lunch.
14:00	Afternoon nature drive <u>OR</u> relax at the lodge.	15:30	Return to the train (±75 min).	15:30	Return to the train (±75 min).
16:30	Tea in the lounge and observation cars.	19:30	Dinner is served in the dining cars en route to Harrismith. <i>Dress: Formal</i>	19:30	Dinner is served in the dining cars en route to Harrismith. <i>Dress: Formal</i>
19:30	Dinner is served in the dining cars. <i>Dress: Formal</i>				
<p>The Drakensberg Mountains were first named by the Voortrekkers who thought the unbroken chain of heavily weathered peaks reminded them of the spines on a dragon’s back, hence the name ‘Dragon Mountain’ or <i>Drakensberg</i> in Afrikaans.</p>					
DAY 8: GOLDEN GATE NATIONAL PARK & CLARENS					
06:00	Breakfast is served in the dining cars.	06:00	Breakfast is served in the dining cars.	06:00	Breakfast is served in the dining cars.
08:00	Take a drive through the Golden Gate Highlands National Park . The park’s most notable features are its golden ochre and orange-hued deeply eroded sandstone cliffs and outcrops, especially the Brandwag Rock.	08:00	Take a drive through the Golden Gate Highlands National Park . The park’s most notable features are its golden ochre and orange-hued deeply eroded sandstone cliffs and outcrops, especially the Brandwag Rock.	08:00	Take a drive through the Golden Gate Highlands National Park . The park’s most notable features are its golden ochre and orange-hued deeply eroded sandstone cliffs and outcrops, especially the Brandwag Rock.
09:30	Visit the small and picturesque town of Clarens situated in the foothills of the Maluti Mountains . Enjoy an early lunch (own account).	09:30	Visit the small and picturesque town of Clarens situated in the foothills of the Maluti Mountains . Enjoy an early lunch (own account).	09:30	Visit the small and picturesque town of Clarens situated in the foothills of the Maluti Mountains . Enjoy an early lunch (own account).
13:00	Transfer (±60 mins) to the Sandstone Heritage Trust , a large agricultural estate that houses an impressive collection of heritage trains, tractors, busses, cars and military vehicles.	13:00	Transfer (±60 mins) to the Sandstone Heritage Trust , a large agricultural estate that houses an impressive collection of heritage trains, tractors, busses, cars and military vehicles.	13:00	Transfer (±60 mins) to the Sandstone Heritage Trust , a large agricultural estate that houses an impressive collection of heritage trains, tractors, busses, cars and military vehicles.
15:30	Transfer (±60 mins) to the train at Bethlehem and depart for Bloemfontein.	15:30	Transfer (±60 mins) to the train at Bethlehem and depart for Bloemfontein.	15:30	Transfer (±60 mins) to the train at Bethlehem and depart for Bloemfontein.
16:30	Tea in the lounge and observation cars.	16:30	Tea in the lounge and observation cars.	16:30	Tea in the lounge and observation cars.
19:30	Dinner is served in the dining cars. <i>Dress: Formal</i>	19:30	Dinner is served in the dining cars. <i>Dress: Formal</i>	19:30	Dinner is served in the dining cars. <i>Dress: Formal</i>
	The observation car will be leading the train until Port Elizabeth – a different aspect that our rail enthusiasts enjoy.				
DAY 9: BLOEMFONTEIN					
06:00	Breakfast is served in the dining cars.	06:00	Breakfast is served in the dining cars.	06:00	Breakfast is served in the dining cars.
08:00	Tour of Bloemfontein including the Women’s Memorial and Anglo Boer War Museum.	08:00	Tour of Bloemfontein including the Women’s Memorial and Anglo Boer War Museum.	08:00	Tour of Bloemfontein including the Women’s Memorial and Anglo Boer War Museum.
10:00	Traverse the Karoo , a vast and beautiful semi-desert stretching across the great South African plateau inland from the Cape coast with scattered towns and villages. Cross the dry southeastern region with its variety of grasses, hardy shrubs, tumbleweeds and succulents and descend the Great Escarpment towards the coast.	10:00	Traverse the Karoo , a vast and beautiful semi-desert stretching across the great South African plateau inland from the Cape coast with scattered towns and villages. Cross the dry southeastern region with its variety of grasses, hardy shrubs, tumbleweeds and succulents and descend the Great Escarpment towards the coast.	10:00	Traverse the Karoo , a vast and beautiful semi-desert stretching across the great South African plateau inland from the Cape coast with scattered towns and villages. Cross the dry southeastern region with its variety of grasses, hardy shrubs, tumbleweeds and succulents and descend the Great Escarpment towards the coast.
13:00	Lunch is served in the dining cars.	13:00	Lunch is served in the dining cars.	13:00	Lunch is served in the dining cars.
16:30	Tea in the lounge and observation cars.	16:30	Tea in the lounge and observation cars.	16:30	Tea in the lounge and observation cars.
19:30	Dinner is served in the dining cars. <i>Dress: Formal</i>	19:30	Dinner is served in the dining cars. <i>Dress: Formal</i>	19:30	Dinner is served in the dining cars. <i>Dress: Formal</i>

	Bloemfontein is the seat of the South African judicial system. At the end of the 19th century it was also the capital of the old Boer Republic of The Orange Free State. Bloemfontein is capital of the Free State Province and is also known as the Rose City. Loch Logan Waterfront is next to the city's newly renovated stadium, which was one of the venues during the 2010 Soccer World Cup. The Women's Memorial at the Anglo Boer War Museum is a reminder of life in the concentration camps and commemorates the 27 000 women and children who died in these camps. The Museum itself is a graphic depiction of the hardship endured by all during the war and relates the history of South Africa from 1652.		
DAY 10: ADDO ELEPHANT PARK		HUMEWOOD	
07:00	Breakfast is served in the dining cars until 10:00.	07:00	Breakfast is served in the dining cars until departure.
12:30	Lunch is served in the dining cars. Game drive in Addo Elephant Park , South Africa's third largest national reserve stretching from the semi-arid Karoo, over the Zuurberg Mountains and down through the Sundays River valley to the coast. The park is home to one of the densest African Elephant populations on earth – roughly 600. Return to the train. Depart for Port Elizabeth.		Transfer (±90 min) to Humewood Golf Course for tee off and lunch. Return to the train. Port Elizabeth, known as the "Friendly City" or "Windy City", is a major seaport oriented towards automotive assembly, manufacturing and export industries. It is the most populous city in the Eastern Cape.
19:30	Dinner is served in the dining cars. <i>Dress: Formal</i>	19:30	Dinner is served in the dining cars. <i>Dress: Formal</i>
DAY 11: KNYSNA		PEZULA/SIMOLA	
	Please pack an overnight bag for your stay at Fancourt. Tog bags have been placed in your suites for your convenience.		Please pack an overnight bag for your stay at Fancourt. Tog bags have been placed in your suites for your convenience.
06:00	Breakfast is served in the dining cars.	06:00	Breakfast is served in the dining cars.
08:00	Transfer (±90 min) from Port Elizabeth Station to Oudebosch Farm Stall.	07:30	Transfer (±90 min) from Port Elizabeth Station to Oudebosch Farm Stall.
09:30	Enjoy a refreshment stop at Oudebosch.	09:00	Enjoy a refreshment stop at Oudebosch.
10:00	Transfer (±90 min) to Knysna for a lagoon ferry ride with lunch.	09:30	Transfer (±90 min) from Oudebosch Farm Stall to Pezula OR Simola for tee off and lunch. Check-in at Fancourt Estate after golf.
16:30	Transfer (±60 min) to Fancourt and check-in.		
19:00	Dinner and overnight at Fancourt. <i>Dress: Smart Casual</i>	19:00	Dinner and overnight at Fancourt. <i>Dress: Smart Casual</i>
George and Knysna sit between the majestic Outeniqua Mountains to the north and the Indian Ocean to the south. The Knysna Heads – two sandstone cliffs guarding the mouth of the lagoon connecting the estuary with the sea – is a dramatic viewpoint. The Garden Route is a narrow coastal terrace lying between the deep-set coastal cliffs rising sheer out of the sea and the mountains a short distance inland – a topology that facilitates heavy rainfall, hence the name as it is always lush and green.			
DAY 12: OUDTSHOORN		FANCOURT MONTAGU/OUTENIQUA	
	You may call Reception to collect your bag or take it to check-out on departure.		You may call Reception to collect your bag or take it to check-out before tee off.
06:30	Breakfast is served until 09:30. Check out.	06:30	Breakfast is served until tee off at Fancourt .
10:00	Transfer (±60 min) to an ostrich farm for a visit followed by lunch.	13:30	After lunch, transfer (±180 min) to Prince Albert Rd Station to rejoin the train. Enjoy a refreshment stop en route.
13:30	Transfer (±30 min) to the Cango Caves for a visit.	16:30	Tea in the lounge and observation cars.
15:00	Transfer (±150 min) to Prince Albert Rd Station.	19:30	Dinner is served in the dining cars en route to Matjiesfontein. <i>Dress: "1920s" Theme or Smart Casual</i>
19:30	Dinner is served in the dining cars en route to Matjiesfontein. <i>Dress: "1920s" Theme or Smart Casual</i>		
This semi-desert region is situated at the foot of the majestic Swartberg mountain range where many rivers, streams and falls have their origins. The great natural wonder of the Cango Caves has colourful underground chambers with breathtaking limestone formations. Oudtshoorn is regarded as the centre of the Klein Karoo and is famous for feathering the world in the time of the boa and grand hats. The ostrich boom of the early 20th century turned out many millionaires who, in turn, created elaborate lifestyles in this remote part of Africa.			
DAY 13: CAPE TOWN			
	Please ensure luggage is ready for collection 15 minutes before arrival and that you have your passport.		
07:00	Breakfast is served in the dining cars until 10:00. Trundle through the spectacular mountain ranges and scenic winelands of the Western Cape towards the coast.		
13:00	Lunch is served in the dining cars.		
16:30	Tea in the lounge and observation cars.		
18:00	Arrive at journey's end at Cape Town Station .		

Please dress accordingly for excursions/game drives: mornings can be cool then warm up considerably; afternoons can be warm then cool down considerably. Warm clothing, comfortable shoes, hats and sun protection are advised. Rain capes are available. See Golf Course Information for the dress code at the golf courses.

Excursions may be changed according to schedule achieved. Times are approximate and cannot be guaranteed.

The golfers' itinerary is prebooked so non-golfer additions are not accepted. Please consult with the Golf Pro.

Please check with the Train Manager or reservations@rovos.co.za for any updates or changes to the itinerary.

In your suite you will find the *Journeys* magazine that features articles of interest related to the route.

INCLUDED: Accommodation; all meals; all beverages on board; room service; limited laundry; excursions with a guide (where applicable); preselected local wines, beers and soft drinks on excursions; entrance fees as per itinerary; government tax; golf, green fees and carts. **EXCLUDED:** All other beverages; international sparkling wine; gratuities; personal expenses; visas; travel insurance; pre- and post-tour transfers, accommodation and flights.

MEALS ON BOARD (unless adjusted) Breakfast 07:00-10:00 • Lunch 13:00 • Tea 16:30 • Dinner 19:30



COURSE INFORMATION

Course selection is dependent on availability

WHITE RIVER

Mbombela • Parklands • 6 036m • Carts available • www.whiterivercountryclub.co.za

Naturally adapted to the valley floor upon which it lies, White River is located at the feet of several private nature reserves. Such is the beauty of the course that holes 7 and 11 have been compared to the likes of Augusta. Opened in 1924, it was designed by Gary Player and Reg Taylor. The long, snaking river that runs through the course is the defining feature and is home to an astounding array of flora and fauna. **Signature hole: 5th - par 3 - 138m:** This hole calls for an accurate tee shot over the river onto a gently sloping green.

MBOMBELA

Mbombela • Parklands • 5 700m • Carts available • www.nelspruitgolfclub.co.za

Mbombela lies in the fertile valley of the Crocodile River in the hot and humid Lowveld. It has a very important place on the tourist map due to its close proximity to the Kruger National Park. Founded in November 1928 and moved to its present location in 1939, Mbombela is one of Mpumalanga's top courses. The bushveld course is a Bob Grimsdell design built among rocky outcrops. It was a nine-hole for nearly 30 years before Grimsdell returned to complete a second nine in 1967. It was left largely untouched until 1998 when Peter Matcovich upgraded it. The course is lined with indigenous lowveld trees and bent grass greens and cynoden/kikuyu fairways complement the landscape. Mbombela is famous for hosting the annual Jock of the Bushveld Festival of Golf, considered the biggest amateur tournament of its kind in the world. Started in 1968, it now receives some 800 amateurs from far and wide who play more than 2 000 rounds during a week in May.

LEOPARD CREEK *(If available, this course may be booked on your own account)*

Kruger Park Malelane • Parklands • 6 631m • Carts compulsory • www.leopardcreek.co.za

This ultra-exclusive world-class facility is the brainchild of magnate Johan Rupert and, as can be expected, no expense was spared. Bordered to the north and the west by the picturesque Crocodile River and the Kruger National Park, the course represents African golf at its best with indigenous bushveld bordering the immaculate fairways and greens. Innovative architectural and landscaping techniques ensure the course is naturally protected from animals, while lakes and small streams divert through the development to create scenic vistas and interesting golf strategies. Hazards take a new dimension for much of the water is home to the magnificent creatures for which the river is named...crocodiles.

Signature hole: 13th - par 5 - 505m Here the green is right on the edge of the river but 32m above the water level offering magnificent views into the Kruger Park.

NKONYENI

Eswatini • Bushveld • 5 810m • Carts available • www.nkonyenigroup.co.za

Nkonyeni Golf Estate is situated in 1200 hectares of gorgeous bushveld overlooking the Great Usuthu River and surrounding mountains. Built in 2007, the championship course was designed by Phil Jacobs (previously associated with the Gary Player Group and responsible for a total of 40 golf courses in France, Hong Kong, China, Philippines, Indonesia and South Africa) and further constructed by Robert Richardson. The bushveld course meanders through the private game reserve providing a unique experience at the 18th hole with a shot across the Usuthu River onto an island surrounded by rocks.

ROYAL SWAZI

Eswatini • Parklands • 6 166m • Carts available • www.suninternational.com

This spectacular championship course is one of the most scenic locations found in the world. Opened in 1966, it has been laid out on the slopes of the Lebombo Range that curve gently down into the valley. The first nine holes are comparatively level but the second nine fully exploits the mountainous terrain. Challenging features include lakes, gullies thick with vegetation, out-of-bound areas running close to fairways, swirling breezes, clusters of magnificent trees and indigenous plants and wickedly sited bunkers – one is so steep it requires steps to facilitate access.

DURBAN COUNTRY CLUB

Durban • Semi-links • 6 157m • Carts available • www.dcclub.co.za

Built by George Waterman and fellow professional golfer Laurie Waters, the Durban Country Club was established in 1922 and has a proud history. The difficulties these men faced were immense as all earth-moving had to be done manually, giant sand dunes were flattened and dense bush and trees chopped down and carted away. Renowned for its classic Cape Dutch architecture, lush vegetation, undulating fairways, sand dunes and beautiful setting overlooking the Indian Ocean, the club has been the venue of choice for many an important celebration in its rich history. **Signature Hole: 3rd - par 5 - 468m** A tee shot from the highest point on the course into a valley below, completely exposing the drive to the ocean gusts. Trees on the right of the straightaway hole need to be avoided as well as the large fairway bunker on the landing area to the left.

MOUNT EDGECOMBE

Durban • Parklands • 5 885m • Carts available • www.mountedgedcombe.com

Neatly tucked away in the rolling hills of KwaZulu-Natal's north coast, Mount Edgecombe Country Club has two 18-hole championship courses, The Woods and The Lakes. Originally known as the Hulets Country Club and created by Sid Brews in 1936, the course was upgraded in 1992 by Hugh Baiocchi and meets USGA specifications.

The Woods is a parkland layout with four sets of tees playable by golfers of any handicap. **Signature holes:** There are three special holes that constitute the course's "Amen Corner" from the 14th to 16th. Holes 14 to 16 are where water hazards come into play. The first one is a par 5 with water guarding the green followed by a par 3 across water and a par 4 where a dam must be carried to reach the fairway.

In 1994, Daysen, De Villiers and Van der Merwe were commissioned to design **The Lakes** directly south of The Woods. Their philosophy was to design a challenging but fair course where serious golfers could test their skills but an occasional golfer could enjoy the game. Opened in 1997, the course is undulating with indigenous bush in places and its share of imposing water hazards. **Signature holes:** The 8th and 9th run alongside the Pani Dam to complete the front nine; water guards the left side of the holes and indigenous bush the right, so make sure to be accurate from the tee.

COTSWOLD DOWNS

Durban • Parklands • 6 193m • Carts available • www.cotswolddowns.co.za

Set on Hillcrest's doorstep, Cotswold Downs lifestyle and golf estate has great views, rolling hills, indigenous bush, spectacular birdlife and free-roaming antelope. Designed by Peter Matkovich to USGA specifications, the 18-hole championship parklands-type course blends seamlessly with its surrounds featuring bent-grass greens, undulating fairways and natural water features. A mixture of cool season and summer grasses allows the course to be lush all year round. Fairways are punctuated by dams, wetlands and ponds that attract a variety of wildlife while views are excellent from the tee boxes. All levels will find the course challenging but enjoyable and, at a length of 6193m, golfers can expect the odd long par 5 that will test their driving skills with cleverly placed bunkers and interesting water hazards.

CHAMPAGNE SPORTS RESORT

Drakensberg • Mountain • 7 400m • Carts available • www.champagnesportsresort.com

Located in the beautiful Drakensberg area, this course has to be rated as one of the most scenically memorable golf layouts in South Africa. Designed by Hugh Baiocchi and Kevin Curren, it successfully blends the natural attributes of the terrain and the surrounding beauty with the modern demands of a quality course. It undulates up and around the contours of a valley that nestles under the dominant peaks of Champagne and Cathkin Peaks and incorporates several holes with blind tee shots. Professional and novice alike will appreciate the 84 well-appointed bunkers that line the fairways and greens. The quality of the greens is accredited to Trevor Livesey whose passion remains unabated. Though the drama of the mighty mountains dominates the eye, the course also enjoys gentle vistas where the lower hills create a kaleidoscope of colour blessed with trees, rivers and dams to add even more of a challenge.

HUMEWOOD

Port Elizabeth • Links • 6 225m • Walking course • www.humewoodgolf.co.za

Situated on the sand dunes on the shores of Algoa Bay, this true links course is characterised by thick coastal bush, swales, humps and hollows. Although the fairways are wide and undulating in order to compensate for the strong winds, the rough that borders them is unforgiving. The holes are simple yet neat, the gulf greens are fast and firm, the few bunkers are well positioned with tough, steep faces and there are no water hazards. **Signature hole: 13th - par 4 - 408m** This hole runs uphill along a severely sloped fairway with a tough semi-blind approach to a tiny green hidden behind a mound with rough to the right, a bunker to the left and thick bush behind it.

PEZULA

Knysna • Links and Parklands • 5 963m • Carts available • www.pezulagolf.com

Pezula is a sweeping spectacle of fairways and greens rolling through the pristine Southern Cape landscape. The award-winning course, designed by David Dale and Ronald Fream of GolfPlan USA, rates amongst the best and the most scenic in the world. Covering 254ha on the Knysna clifftops, Pezula has views of both the lagoon and the Indian Ocean. It is designed to include a full range of shots in a diverse coastal terrain making it a challenging, rewarding and complete golf experience for players of all levels. **Signature hole: 13th - par 5 - 467m** This amazing hole drops 200ft and is measured in 'airtime'. Your level or uneven lie will determine your second shot selection. Don't forget to look back to the tee when you finish the hole.

SIMOLA

Knysna • Parklands • 6 401m • Carts compulsory due to distances • www.simolaestate.co.za

Keeping your head down at Simola can be a challenge as the views around the course are awe-inspiring. Every hole either looks across the Knysna Lagoon or over the Knysna River as it twists and turns through the valley below. It is clear to see why Simola takes its place as one of South Africa's premier golfing destinations. It's also the first Jack Nicklaus signature course on the Garden Route reflecting the maestro's philosophy of attuning the layout and design to the natural lie of the land. Set below high ridges, the course is free from the wind that so often plagues coastal courses. Fairways flow with the natural undulating contours and the unusual configuration of five par 5s and five par 3s add a dimension to the game. Even with all the uphill and downhill holes, Nicklaus has cleverly achieved a course where you seldom have an uneven lie. The short holes are a feature of the layout testing a wide range of clubs from a fairway metal at the 6th to a wedge at the 17th. The par 5s are excellent beginning with the switchback opening hole that must be one of the most challenging. Three of the par 5s are played to elevated greens and these are tough targets to hit even with a short pitch.

FANCOURT COUNTRY CLUB

George • 2 Parkland • Carts available • www.fancourt.co.za

1. MONTAGU • 6 714m • This course is exquisitely conditioned with a glorious parkland layout covering large tracts of varying terrain on rolling land. Mature trees, flowerbeds, shrubs and water hazards provide a colourful contrast. **Signature hole: 17th - par 3 - 190m** This is scary for the average golfer with its long carry over water but the green is large and receptive so ignore it and go for the flag. If conservative, favour the left side of the green.

2. OUTENIQUA • 6 312m • Designed by Gary Player and named after the mountain range overlooking the area, this parklands course is more forgiving than Montagu being more open in appearance, yet it has its share of challenges and risk-and-reward moments. **Signature hole: 14th - par 4 - 421m** No surprise this is the toughest hole with its intimidating tee shot over water. If the flag is on the left of the green, play conservatively for the middle as there is water lurking at the back left.

DRESS CODE

Acceptable clothing:

- Shirts with collars and sleeves must be tucked in
- Traditional long or short golf trousers
- Short trousers with knee-length stockings or short white socks
- Ladies skirts or culottes must be knee-length
- Golf hats or peaks worn with peak forward
- Golf shoes with soft spikes (most clubs)

Not acceptable:

- T-shirts, vests or sleeveless shirts
- Denim jeans
- Sweatpants or cargo pants
- Drawstring shorts
- Shoes without socks
- Cross-trainer sports shoes



SPECIFICATIONS

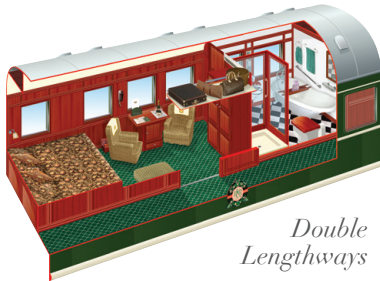
ROYAL SUITES

$\pm 16m^2$
 $\pm 172ft^2$

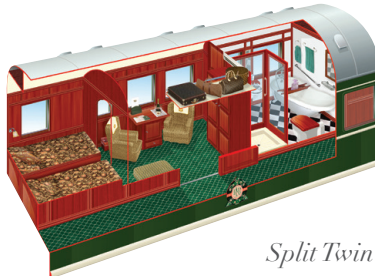
Bed Dimensions: LxW in CM

Double: 200x189

Split Twin: 200x75



*Double
Lengthways*



Split Twin

Minibar, air conditioning, writing desk, luggage shelf, cupboards, safe, en-suite bathroom with toilet, basin, bath and shower.

DELUXE SUITES

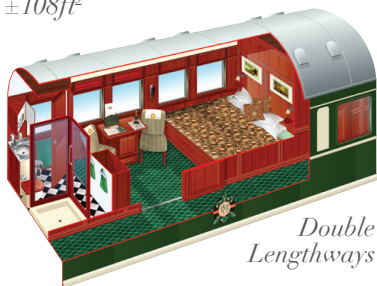
$\pm 10m^2$
 $\pm 108ft^2$

Bed Dimensions: LxW in CM

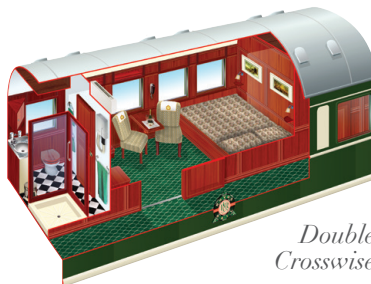
Double Lengthways: 189x189

Double Crosswise: 189x160

Split Twin: 189x75



*Double
Lengthways*



*Double
Crosswise*

Split Twin

Minibar, air conditioning, writing desk, luggage shelf, cupboards, safe, en-suite bathroom with toilet, basin and shower.

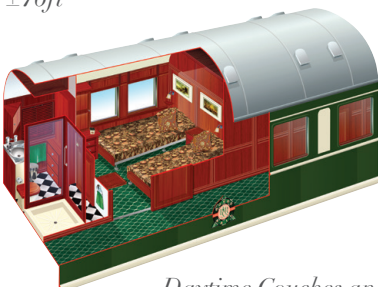
PULLMAN GOLD SUITES

$\pm 7m^2$
 $\pm 76ft^2$

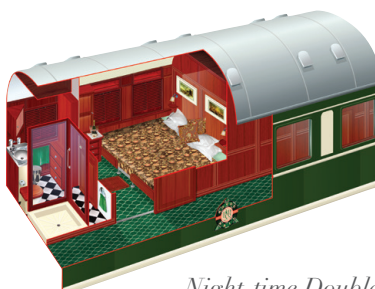
Bed Dimensions: LxW in CM

Double: 189x189

Split Twin: 189x75



*Daytime Couches and
Night-time Split Twin*



Night-time Double

Minibar, air conditioning, fold-out writing desk, luggage shelf, cupboards, safe, en-suite bathroom with toilet, basin and shower.

THE SUITES & COACHES

Each train has accommodation carriages, dining cars, a lounge car (± 26 seats), small gift shop, smoking lounge (± 11 seats) and observation car (± 32 seats) with open-air balcony. The three types of suites are elegant and spacious offering passengers privacy, comfort and luxury with double or twin beds and fittings and facilities that are of the highest standard. All have en-suites with shower, toilet, basin and bath (Royal only), tea facilities, safes, air conditioning, linen and amenities and are serviced daily. There is adequate storage and small cupboards with hangers and shelves.

Suite layouts may differ from images.

Royals and Deluxes sometimes have a room divider.

ROYAL SUITES



DELUXE SUITES



PULLMAN GOLD SUITES



PILLARED DINING CAR



BANQUETTE DINING CAR



OBSERVATION CAR



LOUNGE CAR



CLUB LOUNGE & DELUXE CAR



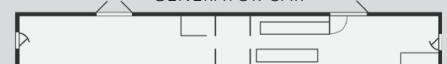
STAFF CAR



KITCHEN CAR



GENERATOR CAR





GENERAL INFO & FAQs

BOOKING: To book as an agent or a guest, please contact reservations@rovos.co.za or call +27 (0) 12 315 8242.

Upon written request via email and subject to availability, we will **PROVISIONALLY** book your place on the chosen tour. Space is allocated and held BUT if another client requires definite suites, the holding agent/guest will be asked to confirm with a deposit payment or release the suite. Upon written confirmation via email and a completed Reservation Form, confirmation details and a proforma invoice will be sent. Upon receipt of the relevant payment the booking will be **CONFIRMED** and a confirmation invoice will be sent. On confirmation of a reservation, our Terms & Conditions will be deemed to have been accepted and will be strictly adhered to.

CANCELLATION: Cancellation of a confirmed booking received prior to departure is subject to a fee of the per person tour price. See Terms & Conditions. **Cancellation insurance is compulsory** as these fees will not be waived. We offer insurance to South African residents. For international guests we suggest you contact your local insurance agent for assistance. Please bring a copy of your travel insurance policy stating clearly the company, policy number and 24-hour medical emergency telephone number.

PAYMENTS: Payment can be made via bank transfer or credit card (direct guests only via Paygate). Details provided at time of booking. Due to the high cost of credit card charges in South Africa, we prefer that all clients pay via bank transfer. Please reference the payment with your full booking reference number and email proof to payment@rovos.co.za. We are a South African company and reserve the right to charge/refund in ZAR. As legally required, refunds are processed into the same account from which the initial payment was received. **Journeys invoiced in ZAR:** All bank transfers are processed/refunded in ZAR. **Journeys invoiced in USD:** USD bank transfers are processed/refunded in USD. **All credit card payments for all journeys** are processed/refunded in ZAR. Rovos Rail is not liable for any loss in currency due to rate of exchange fluctuations.

PASSPORTS & VISAS: The onus is upon the client to ensure passports and visas, as may be required, are valid prior to departure for Africa. On the various journeys we travel: South Africa, eSwatini, Namibia, Botswana, Zimbabwe, Zambia, Tanzania, DRC and Angola. Some nationalities are eligible to purchase port-of-entry visas. Immigration forms will be available on board. Please ensure you have a minimum of US\$200 in cash with you. Angolan and DRC visas must be obtained prior to travel. We request that Tanzanian visas are obtained prior to travel when possible. Passports must have at least **five blank VISA pages** and must be valid for at least **six months** from your return-home date. Please enquire with us or check with the relevant embassies in good time. Visas are also available through visa/booking agents.

SCHEDULING TIMES, ROUTES & EXCURSIONS: We wish to bring to your attention that Rovos Rail is solely reliant on the traction and railway services provided by the countries through which we travel. Our hands are regrettably tied when these services fail be they due to locomotives, signals, overhead power-cable damage and/or theft, vandalism, electricity outages, railway tracks or issues with drivers etc. Delays can occur due to our reliance on these national organisations. Rovos Rail is not responsible and cannot be held liable for any delays or changes in tour arrangements that may be caused by natural or other factors beyond our control. Rovos Rail reserves the right to cancel or amend our routing, any excursions and the tour departure dates provided we can offer clients alternative excursions or departure dates. **Rovos Rail cannot guarantee excursions or departure and arrival times.** Our obligation to transport guests from departure to arrival points on schedule will override any commitment to excursions although we will endeavour to carry out all of the off-train experiences. **We strongly caution against same-day air travel on departure/arrival days due to possible delays with flights or the train.** Should you be delayed, kindly contact +27 (0)12 315 8242.

JOURNEYS & PRIVATE HIRE: We offer a variety of journeys from 48 hours to 15 nights that cover the subcontinent of Africa. The trains run year-round although some of our short journeys do not run during our winter months. We prefer you enjoy the full journey experience although you are permitted to disembark earlier at a convenient stop – keeping in mind the rate will remain the same. The scheduled journeys are available for full charter. You can also combine our 42- or 72-bed train with other entertaining products for bespoke charters including incentive groups, historical expeditions, cycling tours and private gatherings. The Events Train, suitable for day trips only, caters for up to 250 guests and is the perfect venue for weddings, incentives, conferences and product launches. See rovos.com.

ROVOS RAIL STATION TOUR & MUSEUM: A highlight for guests is a visit to the private station headquarters in Pretoria where the Rovos team work assiduously to ensure the locomotives and trains are maintained to the highest standard. This is the busy hub of a provisioning operation that is world-class in terms of efficiency and attention to detail. The tour will show you the nuts and bolts of the company. We also have a museum showing a historical collection of train paraphernalia. Please arrive two hours before departure.

CHECK-IN: Please check-in a minimum of **one hour** before departure. If Rovos Rail Station in Pretoria is your starting point, we suggest arriving **two hours** before departure if you wish to do a site tour. If Pretoria is your arrival point, we suggest delaying your pick-up so you can enjoy the site tour. Passports are required at check-in. **No vouchers are required.** Luggage will be tagged and placed in your suite on board the train where you will find a full itinerary pack. # **View Cape Town journey new running times in 2026 beginning the transition in 2025**

ADDRESSES	JOURNEY	CHECK-IN BY	DEPART	ARRIVE
PRETORIA: Rovos Rail Station, 1 Transnet Avenue, Capital Park, Pretoria, South Africa	PRETORIA-CAPE TOWN*	08:00	10:00	10:00*
	CAPE TOWN-PRETORIA*	15:00 (Lounge)*	16:00*	10:00*
	PRETORIA-DURBAN	08:00	10:00	16:00 (Plat 14)
	DURBAN-PRETORIA	09:00 (Lounge)	10:00 (Plat 14)	16:00
CAPE TOWN: Rovos Rail Lounge , 1 Adderley Street, Paul Sauer Building, Cape Town, South Africa	PRETORIA-VICTORIA FALLS 3-NIGHT	08:00	10:00	10:00
	VICTORIA FALLS-PRETORIA 3-NIGHT	16:00 (Hotel)	17:00	10:00
	PRETORIA-VICTORIA FALLS 4-NIGHT	16:00	18:00	10:00
	VICTORIA FALLS-PRETORIA 4-NIGHT	16:00 (Hotel)	17:00	10:00
DURBAN: Durban Station Lounge , Jelf Taylor Crescent, Stamford Hill, Durban, South Africa	GOLF SAFARI PRETORIA-PRETORIA	10:00	12:00	10:00
	NAMIBIA SAFARI PRY-WALVIS BAY	10:00	11:00	12:00
	NAMIBIA SAFARI WALVIS BAY-PRY	10:00	11:00	17:00
	SOUTHERN CROSS PRY-VIC FALLS	08:00	10:00	18:30 (Hotel)
VICTORIA FALLS: Victoria Falls Hotel and Station, Mallet Drive, Victoria Falls, Zimbabwe	SOUTHERN CROSS VIC FALLS-PRY	10:30 (Hotel)	17:00	18:00
	COLLAGE PRETORIA-CAPE TOWN	16:00	18:00	18:00
	COLLAGE CAPE TOWN-PRETORIA	14:30 (Lounge)	16:00	18:00
	AFRICAN TRILOGY PRY-WALVIS BAY	08:00	10:00	12:00
WALVIS BAY: Walvis Bay Station, Corner 6 th Street and 11 th Road, Walvis Bay, Namibia	VICTORIA FALLS-LOBITO	15:00 (Hotel)	16:00	10:00
	LOBITO-VICTORIA FALLS	10:00 (Hotel)	12:00	11:00
	DAR ES SALAAM-LOBITO	09:30 (Hotel)	12:00	10:00
	LOBITO-DAR ES SALAAM	10:00 (Hotel)	12:00	11:00
DAR: Tazara Station, Julius K. Nyerere Road, Dar es Salaam CHECK-IN FOR DAR: Serena Hotel, Ohio St CHECK-IN FOR TOTO: Hyatt Kilimanjaro Hotel, 24 Kivukoni Rd	CAPE TOWN-DAR ES SALAAM	14:30 (Lounge)	16:00	11:00
	DAR ES SALAAM-CAPE TOWN	09:30 (Hotel)	12:00	10:00
LOBITO: Central Station, Av. Craveiro Lopes, Lobito, Angola CHECK-IN: Hotel Terminus, R. Robert Williams 16, Lobito				

AMENITIES: We have the following South African biodegradable and/or recyclable products on board: soap (40g), bamboo tissues, shampoo (50ml), hand and body wash (50ml), hand and body lotion (50ml), lip balm (15ml), insect repellent spray (for journeys over 4 days), reusable bamboo rounds, bamboo ear buds, a compostable shower cap, ear plugs and other items such as sun cream, razors and nail files. Plug-in hairdryers – in addition to your bathroom unit (if applicable) – are also available.

CHILDREN: We do accommodate children but we kindly ask parents to be sensitive to the adult nature and atmosphere of the train by keeping them respectful and quiet. Long journeys are not recommended for under 13s. Children between 0-2 years old are not permitted to travel. There are no child-minding facilities or activities available for children on board. See Child Policy on rovos.com.

CURRENCY

- South Africa – Rands only. We accept all major credit cards on the train.
- Outside of South Africa – Rands are accepted in Namibia and eSwatini. US Dollars are accepted in Zimbabwe, Tanzania (Dar es Salaam only), DRC and Angola. Cash is highly recommended. Hotels and major dealers accept credit cards.
- US Dollars printed before year 2013 or that look worn will not be accepted. Low denominations recommended for shopping/gratuities. Larger denominations recommended for exchanging money to local currency (especially in Tanzania) as you get a better rate.

DIETARIES: We cater for food allergies provided a detailed request has been made at that time of your reservation. If a special request has not been made, the chefs will endeavour to prepare suitable meals with the ingredients available on board. We regret we are unable to prepare meals requiring strict religious observance in the preparation.

DINING & DRINKS: Meals on board are served in one sitting only in the dining cars. Breakfast: 07:00-10:00 • Lunch: 13:00 • Tea: 16:30 • Formal Dinner: 19:30. Bar Service: 07:00-±01:00. All meals are served at these times unless otherwise stated in the timetable. A gong heralds lunch and dinner. We have a carefully curated selection of local and international beverages on board with a proud focus on South African offerings. Our varied collection includes wine, brandy, gin, rum, vodka, whisky, spirits, digestifs, grappa, liqueur, beer, cider, non-alcoholic options, mixers and a cocktail menu. All beverages on board are included while special requests, such as international sparkling wine, may be pre-ordered at an additional cost. Please ensure these requests are made 30+ days before departure.

DRESS

- **Days on board are smart casual:** Neat, conventional yet relatively informal in style combining casual and formal clothing pieces.
- **Dinner on board is formal:** For gentlemen, a collar and tie are mandatory while a jacket is optional. For ladies, we suggest cocktail/evening dresses or suits. Please respect this dress code.
- **On long journeys** we enjoy **themed evenings** where guests can **dress up accordingly** or opt for **smart casual**: 1 x “AFRICA” evening and/or 1 x “1920s” evening. *See itineraries.*
- **Charters:** The dress code is usually determined by the group chartering the train otherwise the above applies.
- **Off-train excursions:** We recommend comfortable walking shoes, sun lotion and hats. If required, blankets and rain capes are available.
- **Game drives** are on open vehicles so please dress accordingly: mornings can be cool then warm up considerably; afternoons can be warm then cool down considerably. Please see average temperatures as a guide.

DRESSING GOWNS: We provide a comfortable one-size-fits-all gown plus slippers for each guest for use on board the train. If you wish to take one home, they are available to purchase from the Gift Shop.

ELECTRICITY: 220V AC 50Hz 3-point round-pronged wall plugs and 110V/220V 2-pin plugs for shavers and chargers. USB ports are in each suite. International adaptors available. A generator supplies power. Please be aware that certain breaks in power are necessary when servicing is required.

GIFT SHOP/ADMINISTRATION: There is a small gift shop on the train and at Rovos Rail Station in Pretoria. Due to the varying exchange rates, credit cards are preferred. The Administration Deputy on duty has a basic first aid kit and personal essentials (razors, sun cream etc.). He/she will also fulfil any administrative requirements and check your onward arrangements.

GRATUITIES: Gratuities for the staff are at your discretion. If you wish to show your appreciation in this manner, there will be a suitably marked envelope in your suite that you can hand directly to the Train Manager who will distribute any amounts on a pro-rata basis among the staff on board. An amount between ±ZAR450 (±US\$25) per guest per night on board is suggested, depending on the length of your journey. At the game lodges, it is customary to tip guides and lodge staff an estimated ±ZAR450 (±US\$25) per guest per day.

LANGUAGES: The staff on board mainly speak English and local languages. For most of the long journeys and dependent on the language, translated itineraries and on-board information will be provided for guests.

LAUNDRY: There is a LIMITED laundry service (10 items/day) on board comprising household washers, dryers and steam irons. The turnaround is 48 hours so we are unable to handle a week's worth of laundry. There are no dry-cleaning facilities en route or on board. Please note that while this a complimentary service we cannot be held responsible for items that may be damaged or lost in the process.

LOCOMOTION: Use of steam has become increasingly difficult over the years as more and more water and coaling facilities have been scrapped. Diesel or electric locomotives are used while steam is used in and around the area of Rovos Rail Station in Pretoria only.

LUGGAGE: It is possible to store luggage in your suite under the bed or above the door on a luggage rack, which provides ample space for storage. There are no luggage restrictions on board although we do not recommend more than two large suitcases. On selected long journeys, guests are provided with a Rovos Rail tog bag that can be used for overnight trips or hand luggage on aircraft. A soft bag is preferable on plane transfers with a luggage weight restriction of 15kg.

MAGAZINES, MAPS & GAMES: There are board games, cards, a card table (dependent), books and magazines available for your use in the lounge and observation cars. In your suite is a map, itinerary and the *Journeys* magazine featuring articles of interest related to your route. If the map supplied is not comprehensive enough you may purchase a more detailed map from the Gift Shop.

MEDICAL

- **All guests are solely responsible for ensuring they are capable of undertaking the tours and activities.**
- **Please inform us at the time of your reservation if you have any medical conditions, physical disabilities or allergies.**
- We have a doctor on board on the Copper Trail, Trail of Two Oceans and Dar es Salaam journeys.
- Anti-malarial precautions are recommended. Malaria areas: eSwatini, Kruger Park, Northern Botswana, Zimbabwe, Zambia, Etosha, Tanzania, DRC and Angola.
- Recommended immunisations (*not required*): Hepatitis A + B, Polio, Tetanus, Cholera (low risk).
- Ebola is confined to the northeast of DRC. We traverse the very southern tip of the country thousands of miles away on the Lobito journeys.
- A Yellow Fever/Medical Exemption Certificate is **essential** if travelling to/from **DRC** and **Angola**. Although all countries travelled through don't require this, countries guests return to **after** the trip often require them.
- Please consult your clinic or doctor. TRAVEL DOCTOR AFRICA *local* 0861 300 911 or *international* +27 (0) 11 214 9030.

MEDICAL EMERGENCIES: Each train is equipped with a standard medical kit, oxygen, automated external defibrillator and a wheelchair. For emergencies there are private healthcare hospitals available. Outside of South Africa, private hospitals are not guaranteed. We can organise evacuation either by road or air to a medical facility should this be required (own account). All our Train Managers have completed First Aid up to Level 3 and are trained in emergency situations. We do, however, strongly recommend that you explain your concerns to your travel insurance company so they can provide you with the necessary cover to meet and exceed such an eventuality.

MOBILE DEVICES & INTERNET: In maintaining the spirit of train travel, there is no radio, television or WiFi on board. The use of mobile phones, laptops and essentially anything that has the ability to disturb other guests is confined to the privacy of your suites only. The reception is poor while the train is moving. It is advised to contact your service provider to ensure the correct settings for network services are activated. WiFi is available at our lounges in Cape Town and Pretoria and at most off-train accommodation (although not always guaranteed).

MOBILITY: We accommodate guests with walking difficulties although we recommend an able-bodied passenger accompany them. We regret that the train is not suitable for wheelchair-bound passengers. Should you have mobility impairments/restrictions or special requirements, we urge you to inform your travel agent or Rovos Rail at the time of booking. See Mobility Info on rovos.com.

PETS: We do not allow any pets or emotional-support animals on board.

POSTAGE: Stamps are available for sale from the Gift Shop. Postcards may be handed to the Administration Deputy for posting.

SECURITY: An electronic safe is provided in the cupboard in each suite. When on board we encourage guests to close shutters or preferably shutters and windows when not in your suites. Please be particularly mindful when passing through stations. The train doors in the passages are all locked from the inside. Your suite door can also lock from the inside.

SERVICE: A dedicated host/ess is available 24 hours a day. They can be called from the telephone in your suite. Your suite is cleaned daily and there is a nightly turndown service. The Train Manager and Deputy Train Manager are on hand throughout the journey to help with any queries. The Administration Deputy is available for an administrative requirements and is based at the Gift Shop.

SMOKING: On board the train, smoking is allowed in the smoking Club Lounge only. HOWEVER, please be mindful of other guests who do not smoke, that the train is generally made up of wood and DO NOT throw flammable items such as cigarette or cigar butts off the train. Bush fires in Africa are a constant and dangerous hazard. Please note at the time of your reservation if you are smoking or non-smoking so that the appropriate room might be requested at the hotels/lodges.

SPECIAL OCCASIONS: Please note at the time of your reservation if you are celebrating an occasion as we'd like to share it with you.

SUITES & COACHES *Measurements in centimetres (cm) = Length x Width*

Each train has accommodation carriages, dining cars, a lounge car (±26 seats), small gift shop, smoking lounge (±11 seats) and observation car (±32 seats) with open-air balcony. The suites are elegant and spacious offering passengers privacy and comfort with double or twin beds and fittings and facilities that are of the highest standard. All have en-suites with shower, toilet, basin and bath (Royal only), minibar, safe, air conditioning, linen and amenities and are serviced daily. There is adequate storage and small cupboards with hangers and shelves.

- Royal Suites** (±16m²/±172ft²) each take up half a carriage and are spacious and elegant. Each has its own private lounge area and en-suite bathroom with Victorian bath, separate shower, toilet and basin. **BEDS:** Double 200x189 • Split Twin 200x75.
- Deluxe Suites** (±10m²/±108ft²) have a lounge area and en-suite bathroom with shower, toilet and basin. **BEDS:** Lengthways Double 189x189 • Crosswise Double 189x160 • Split Twin 189x75.
- Pullman Suites** (±7m²/±76ft²) on **SHORT journeys only** (dependent on capacity) have an en-suite bathroom with shower, toilet and basin. During the day the suite is setup with a comfortable couch that can be converted into a few sleeping options. **BEDS:** Crosswise Double 189x150 • Side-by-side Twin 189x75 – this is achieved by making up the side-by-side twin mattresses with single-bed linen • Single Lower Bunk 189x94 • Single Upper Bunk 189x60.
- Pullman Gold Suites** (±7m²/±76ft²) on **LONG journeys only** (dependent on capacity) have an en-suite bathroom with shower, toilet and basin. During the day the suite is setup with split twin beds configured as couches. **BEDS:** Double 189x189 • Split Twin 189x75.

TEMPERATURE & TIME ZONES: All public cars are fitted with gas-filled air-conditioning systems. Each suite has an individual air conditioner with temperature controls that can also be set to heat mode. Windows should be closed while operating the air-conditioning unit. Electric under-blankets are fitted on the bed.

AVERAGE TEMPS °C	JAN/FEB		MAR/APR		MAY/JUN		JUL/AUG		SEP/OCT		NOV/DEC		Rainfall Months	TIME ZONE
AREA	Min	Max	Min	Max	Min	Max	Min	Max	Min	Max	Min	Max		
Cape Town, SA	16	28	13	26	9	21	7	19	9	22	13	27	Apr-Aug	GMT+2
Pretoria, SA	18	30	15	27	7	23	4	22	13	28	16	30	Oct-Mar	GMT+2
Durban, SA	21	29	19	28	12	25	16	25	16	26	19	28	Oct-Mar	GMT+2
Port Elizabeth, SA	17	23	15	21	12	20	11	18	12	18	15	21	May-Aug	GMT+2
Mbabane, eSwatini	16	28	13	27	5	23	5	23	10	26	14	28	Nov-Feb	GMT+2
Gaborone, Botswana	19	33	14	30	7	25	5	25	14	31	18	33	Dec-Mar	GMT+2
Vic Falls, Zimbabwe	15	29	14	29	8	23	7	27	16	28	16	26	Dec-Mar	GMT+2
Lusaka, Zambia	17	25	15	22	11	17	8	16	17	24	17	25	Dec-Mar	GMT+2
South Luangwa, Zambia	20	31	19	31	12	30	11	20	17	35	20	34	Nov-Mar	GMT+2
DAR, Tanzania	18	28	18	25	19	25	18	23	16	24	18	28	Mar-May	GMT+3
Walvis Bay, Namibia	16	22	15	22	11	22	10	20	11	18	13	20	March	GMT+2
Etosha Pan, Namibia	18	31	17	30	10	27	10	27	15	32	18	33	Jan-Mar	GMT+2
Lubumbashi, DRC	16	27	15	27	9	26	8	27	13	32	16	18	Nov-Mar	GMT+2
Lobito, Angola	28	32	29	34	25	33	20	28	22	25	26	30	Mar-Apr	GMT+1

THE TRACK: The track over which we travel is inconsistently maintained. If you wake at night imagining the train is travelling at high speed, be assured it is the state of the track below creating that impression. We restrict the train to 60km/h (37mph) and over bad sections reduce speed to as little as 20km/h (12mph). If you find it noisy, earplugs are available in your amenities bag and at the Gift Shop.

WATER: The water used on the train is carried in tanks under each coach. These tanks are filled every day but they cannot be topped up while the train is travelling. Please assist us by using water responsibly. Water inside the suites has been filtered and chlorinated; it is safe for bathing and brushing teeth only. Please use the bottled water provided for drinking. Our bottles are biodegradable and made from plants.



TERMS & CONDITIONS

DIRECT GUESTS AND AGENTS: THE BELOW PAYMENT AND CANCELLATION POLICIES APPLY. IF YOU ARE A GUEST THAT HAS BOOKED THROUGH AN AGENT, THEIR PAYMENT AND CANCELLATION POLICIES APPLY.

PROVISIONAL BOOKING: Upon written request via email/fax and subject to availability, we will provisionally book your place on the chosen tour. Space is allocated and held BUT if another client requires definite suites, the holding agent/guest will be asked to confirm with a deposit payment or release the suite. **CONFIRMED BOOKING:** Upon written confirmation via email/fax and a completed Reservation Form, final confirmation details and an invoice will be sent. Upon receipt of the relevant payment the booking will be confirmed. **On confirmation of a reservation, our T&C will be deemed to have been accepted and will be strictly adhered to.** **CANCELLATION:** Cancellation of a confirmed booking received prior to departure is subject to a fee of the per person tour price (see below). **Cancellation insurance is compulsory as these fees will not be waived.**

INDIVIDUALS: PAYMENT SCHEDULE

TO CONFIRM A BOOKING A DEPOSIT PAYMENT OF THE PER PERSON TOUR PRICE IS REQUIRED BEFORE THE DEPARTURE DATE	61+ DAYS BEFORE	60 DAYS BEFORE	A provisional booking will be held for 14 days after which a 25% deposit is due. Final payment is due 60 days prior to travel.
Cape Town, Victoria Falls, Durban	25%	100%	
Golf, Namibia, Southern Cross, Collage, Trilogy, Copper Trail, TOTO, Dar	25%	100%	

INDIVIDUALS: CANCELLATION POLICY

CANCELLATION OF A CONFIRMED BOOKING RECEIVED PRIOR TO DEPARTURE IS SUBJECT TO A FEE OF THE PER PERSON TOUR PRICE	365-91 DAYS BEFORE	90-61 DAYS BEFORE	60-31 DAYS BEFORE	30-0 DAYS BEFORE
Cape Town, Victoria Falls, Durban			25%	100%
Golf, Namibia, Southern Cross, Collage, Trilogy, Copper Trail, TOTO, Dar	10%	25%	50%	100%

GROUPS OF 10 OR MORE GUESTS: PAYMENT SCHEDULE & CANCELLATION POLICY

TO CONFIRM A BOOKING A NON-REFUNDABLE PAYMENT OF THE PER PERSON TOUR PRICE IS REQUIRED BEFORE DEPARTURE	365-246 DAYS BEFORE	245-181 DAYS BEFORE	180-121 DAYS BEFORE	120-61 DAYS BEFORE	60 DAYS BEFORE
Cape Town, Victoria Falls, Durban			10%	20%	100%
Golf, Namibia, Southern Cross, Collage, Trilogy, Copper Trail, TOTO, Dar	10%	30%		50%	100%

- For every 15 paying passengers, the 16th person sharing travels free of charge, confirmed at final invoice 60 days before departure.
- 275 days before departure: the agent/group must provide an allocation sales update and release 20% of the unsold space (if a waitlist persists).
- 245 days before departure: the agent/group must release a further 50% of the unsold space (if a waitlist persists).
- 180 days before departure: the agent/group must release 100% of the unsold space.

DIRECT GUESTS, AGENTS AND GUESTS WHO HAVE BOOKED THROUGH AN AGENT: THE BELOW T&C APPLY.

MAXIMUM TRAIN CAPACITY: 36 suites/72 guests. We reserve the right to alter this capacity as circumstances require.

MEDICAL: Guests are solely responsible for ensuring they are capable of undertaking the tours. Anti-malarial and Yellow Fever precautions may be required in countries being visited.

PASSPORTS & VISAS: The onus is upon the client to ensure passports and visas, as may be required, are valid prior to departure for Africa. Passports must have at least five blank VISA pages and must be valid for at least six months from your return-home date.

PAYMENTS: We are a South African company and reserve the right to charge/refund in ZAR. As legally required, refunds are processed into the same account from which the initial payment was received. **Journeys invoiced in ZAR:** All bank transfers are processed/refunded in ZAR. **Journeys invoiced in USD:** USD bank transfers are processed/refunded in USD. All credit card payments for all journeys are processed/refunded in ZAR. Rovos Rail is not liable for any loss in currency due to rate of exchange fluctuations. There are no refunds for any part of a tour that might be missed due to personal reasons. **Cancellation insurance is compulsory.** Rovos Rail will never change our banking details and/or credit card link via email. Should you receive an email whether on the company's letterhead or in any other form advising you to use alternative banking details and/or credit card link, ignore same and please notify Rovos Rail immediately.

PHOTOGRAPHY: Rovos Rail reserves the right without notice to make use of any photography/film taken by our staff on the tour for general publicity purposes without payment or permission.

RATES: We will do our utmost to keep to the prices published. However, if increases are forced on us, Rovos Rail reserves the right to amend the tour price at any time prior to written confirmation of the reservation. Rate inclusions and exclusions are specified on the itineraries.

SCHEDULING TIMES, ROUTES & EXCURSIONS: Rovos Rail is solely reliant on the traction and railway services provided by the countries through which we travel. Our hands are regrettably tied when these services fail, be they due to locomotives, signals, overhead power-cable damage and/or theft, vandalism, electricity outages, railway tracks or issues with drivers etc. Delays can occur due to our reliance on these national organisations. Rovos Rail is not responsible and cannot be held liable for any delays or changes in tour arrangements that may be caused by natural or other factors beyond the control of Rovos Rail. Rovos Rail reserves the right to cancel or amend our routing, any excursions and the tour departure dates provided we can offer the passenger alternative excursions or departure dates. Rovos Rail cannot guarantee excursions or departure and arrival times. Our obligation to transport guests from departure to arrival points on schedule will override any commitment to excursions although we will endeavour to carry out all of the off-train experiences. **We strongly caution against same-day air travel on departure/arrival days due to possible delays with flights or the train.**

DIRECT GUESTS AND GUESTS WHO HAVE BOOKED THROUGH AN AGENT: THE BELOW GUEST INDEMNITY APPLIES.

GUEST INDEMNITY: Although certain limited insurances have been arranged, neither Rovos Rail Tours (Pty) Ltd and/or Shongololo Express (herein being collectively referred to as 'Rovos Rail'), nor its servants, agents or employees, shall be liable for any loss or damage to passengers' luggage or effects. Insofar as one of the tours may include a visit to a game reserve and whilst attacks by wild animals are extremely rare, similarly neither Rovos Rail, nor its servants, agents or employees, accept any liability whatsoever for any injury or incidents to passengers or their belongings. The passenger hereby waives any claim which he/she may have against Rovos Rail, its servants, agents, employees or subcontractors for any injury and/or loss of any nature whatsoever (including, without limiting the generality of the foregoing, consequential loss) arising for any reason of any nature whatever directly or indirectly out of any aspect of the tour including, without limiting the generality of the foregoing, any form of transport used for the purpose of the tour. This waiver shall be binding on the passenger's executors, heirs, trustees and dependants. The passenger records that all the services and facilities provided to the passenger are accepted voluntarily and with full knowledge that they may expose the passenger to injury, danger or loss. The passenger further records that any statement, representation or information given to him/her by Rovos Rail shall, unless given in writing, not prejudice this waiver in any manner whatsoever. The passenger indemnifies Rovos Rail in respect of any claim that may be made by any third party against it arising out of any claim in respect of which the passenger gives the aforementioned waiver. This agreement shall be governed solely by laws of the Republic of South Africa.

ON CONFIRMATION OF A RESERVATION, OUR T&C WILL BE DEEMED TO HAVE BEEN ACCEPTED AND WILL BE STRICTLY ADHERED TO. PERSONS COMPLETING THIS FORM ACCEPT AND AGREE TO ALL T&C. PERSONS COMPLETING THIS FORM ON BEHALF OF OTHERS WARRANT THAT THEY HAVE FULL AUTHORITY TO DO SO AND, ON THEIR BEHALF, ACCEPT AND AGREE TO ALL T&C.

Date of Trip: _____ Route: _____ Name: _____ Signature: _____

COMPANY: ROVOS RAIL TOURS (PTY) LTD • DIRECTOR: R B VOS • REGISTRATION NUMBER: 1990/004503/07 • VAT NUMBER: 4100127523

UPDATED 31 MARCH 2023